

The Yorkshire Koi Society



NEWSLETTER

A new koi keeping year is well underway which brings with it a renewed energy and enthusiasm for things to come.

The season has started well with a very interesting talk from our guest speaker Kevin Ellis. Big thanks to him for heading up north to come speak to us. It was both informative and amusing.

With the new year also comes change for the committee. I'm sure you will all agree Wayne Taylor has done a brilliant job as Chairman for the last 3 years. I would say you can take it easy now, but seeing as you are revamping your pond I doubt you will get much rest! Good luck with it and we look forward to seeing the finished product.

All the best to Jimmy as chairman and everyone else who has stayed in and taken on new roles.

New committee:

Chairman - Jim Shaw

Vice Chairman & treasurer - Sue Dixon

Events & Membership - Paul Dixon

Secretary/Advertisers & News letter - Laura Scaum

Raffle - Sue Dixon & Mandy Shaw

YKS Merchandise - Jim Shaw / Jane Sneap

Photo show - Jim Shaw / Dave Crellin

Events for 2017

- **13th/14th May** - Photo Show.
- **Sunday 21st May** - First Supper: 3 Dealer visit.
- **Weekend 3rd/4th June** - Northants Koi Club, they visit us.
- **Weekend 24th/25th June** - The BKKS National Koi Show.
- **Weekend 8th/9th July** - Return visit to Northants Koi Club, we visit them.
- **Sunday 30th July** - BBQ at Dave & Andrea Crellin's.
- **Sunday 22nd October** - Last Supper to Laura & Pete Scaum's.
- **Sunday 19th November** - Winter meet

I will take this opportunity to also welcome our new members. I can safely say you are in the midst of a font of knowledge and experience, with members who are friendly and approachable.

So all in all, we have lots to look forward to in the coming months.

Happy koi keeping!

MEMBERSHIP SUBSCRIPTIONS

Please remember to renew your membership if you haven't done so already. Your continued support is important!!

Photo Show, 13th & 14th May.

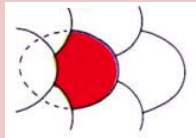
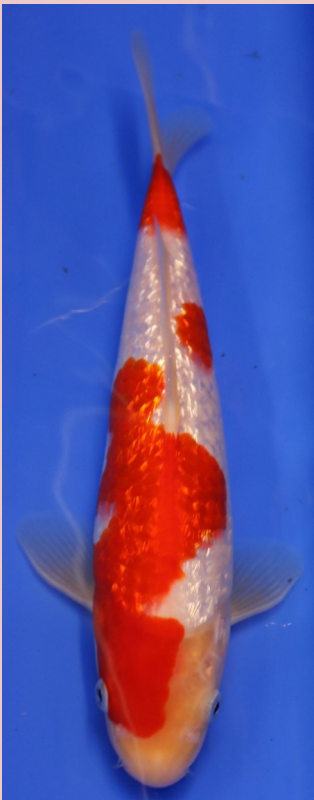
Good luck to all who entered! I'm sure there were lots of fantastic koi entered into the show. Many thanks to Jimmy Shaw, Dave Crellin, Anthony (Judging) and Stephen Grey for taking the time and putting in the effort to facilitate the photo show. We will be looking forward with anticipation to the BBQ presentation.

First Supper: Sunday 21st May.

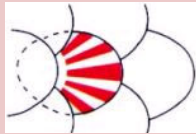
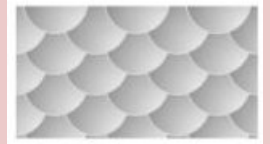
Three dealer visit starting at Absolute Koi for 10:00am. Tea, coffee and butties will be provided. We will then travel on to S & C Koi at their new premises. Then last but by no means least, to Koimasters - Chris Masters place. Bring your cash as there will be plenty of fantastic koi on display.

Koi of the Month

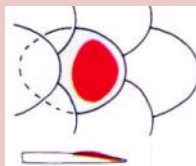
Lets go with the Photo show theme, not specifically a variety; Kin Gin Rin, in this case Kohaku. The term Ginrin is a reference to the scales of the koi not the variety. It is often shortened to ginrin by breeders and hobbyists. There are four types of gin rin.



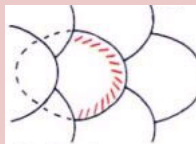
Beta-Gin: this covers the entire scale.



Hiroshima-nishiki, also known as Diamond Gin Rin: Ginrin rays that go to the end of the scale. Is probably the most common type of gin rin.



Tama-Gin or Pearl-Gin: Round ginrin centred in the middle of the scale.



Kado Ginrin: Ginrin covers only the edges of the scales.



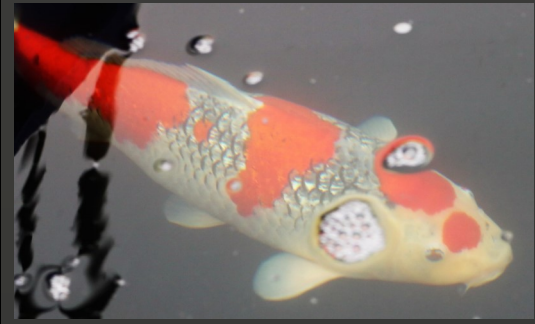
Ginrin scales are highly reflective which makes them glisten and sparkle. Perhaps this is where the term "Living Jewels" comes from.

On the Hi, the ginrin will look more golden in colour. When placed on the black or white they appear silvery.

For a koi to be classified as being ginrin there ideally needs to be 2-3 rows of scales with ginrin on them. The scales also need to be neatly aligned with few missing ginrin patches.

Saturday 6th May.

Today marks the first day of trading at the new Queni Koi establishment. Pete and I thought we would go check it out. We were not disappointed. It is obvious a great deal of love, care and attention has gone into building this place up from just holes in the ground. The calibre of koi on display was outstanding with prices to suit all budgets. Chris and Mike have gone all out, creating a sleek and contemporary look which fits perfectly and effectively raising the bar in the koi industry.



There was a great turn out for the opening and the place was a hive of activity. Tea, coffee and food was on offer.

On display as well as on each tank were Queni Koi's own showers and drum filters. These included the combi/bio's, midi and maxi showers and stand alone drums. All of which appear to be very well made, it was great to see their own range running on the tanks. The shelves were well stocked with food ranges from JPD, Saki Hikari and QK own mix. Well worth a visit!



Members Pond of the Month: Pete Bayliss



Pete is one of our newest members. He was kind enough to answer a few questions and let us have a nosey around his pond and garden.

He started off in the Koi hobby around 23 years ago after seeing a friends pond and koi. He has however like many of us become a more serious hobbyist over the last 4-5 years which resulted in him completely rebuilding his pond and looking into filtration with more knowledge and understanding.

Pete's current set up on his pond (2700 Gallons) is a bottom drain and skimmer running to a Profitech drum to multibay with Japanese matting, static and fluidised K1 which then runs to a three tier shower containing crystal bio, pumice and siporax media. There is also a 12000 superfish pump on the skimmer line and a 10000 superfish pump on the drum that feeds the shower. A planted veg/anoxic pond (600 gallons) runs back to the pond via a waterfall. Pete has a ASHP that heats the pond.

What would you change? I would make the BD aerated to help with flow and circulation of the water.

What is your favourite Koi? Showa.

What has been your best koi keeping experience? Finishing the pond and all the money saved!

What has been your worst koi keeping experience? About 6-7 years ago I lost all my koi. I could never find out why despite doing tests and scrapes. It was very difficult and it's the not knowing that is the hardest part. That fear of not understanding why.

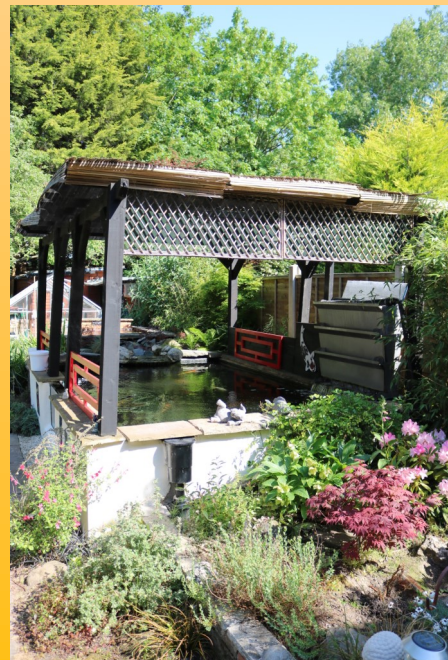


In Pete's shed there are two tanks, 600 and 300 gallons. The smaller one has an easypod and the larger tank has a small multibay, heater and fed to a shower. The shed is hidden away and it was quite surprising seeing how big it was, a little like a tardis!

What do you feed the koi? I use a mixture of Sera, JPD and Aqua Source. Also silk worm pupae, soldier fly larvae.

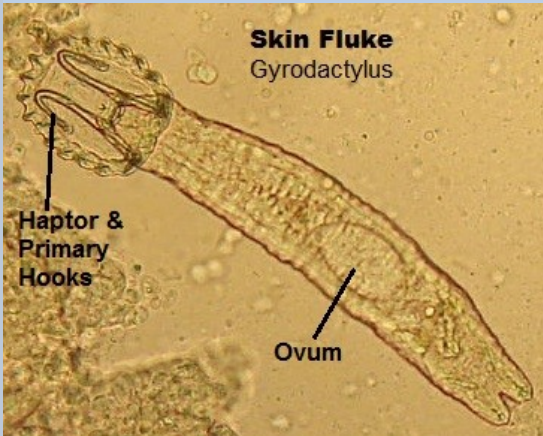
What varieties do you have? Shiro utsuri, Kohaku, Asagi, Chagoi, Soragoi, Goshiki, Sanke, Showa and Ochiba.

How Many koi are in your collection? In the Pond there are 15, in the QT/Grow on about 10.



FOCUS ON..... FLUKES

Skin Flukes (*Gyrodactylus*) gives birth to live young when conditions are favourable.



On a scale of 1-10 this would be placed at a 6-7 for causing mortality in koi. This is due to the amount of tissue damage that can be done to the surface of the koi. The hooks are covered in pathogenic bacteria which often causes bacterial ulcers.

Luckily treatment is often effective in one go as if the parents die so too do the offspring.

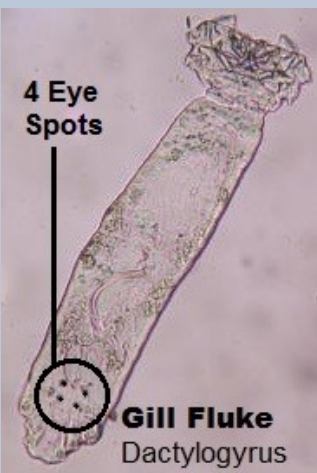
Identification: By taking skin mucous scrapes and microscopic examination of the sample on 50X to 100X magnification.

Symptoms: Extreme flashing, excess mucous production, bacterial ulcers/infection and in bad cases numerous deaths.

Treatments:

- Supaverm 1 ml/100 gallons. It is however difficult to acquire as a vet prescription is required.
- Flubenol 5% 1 gram/89 gallons dissolved in Acetone 10ml/1000 gallons.
- Flukesolve, Fluke M, Fluke P, Alparex (ensure KH is over 5).

Gill Flukes (*Dactylogyrus*). They are hermaphrodites, meaning they have both male and female anatomy. They lay eggs which can remain dormant until conditions become preferable, when they do hatch the young are free swimming but must find a host in approximately 24 hours. Treatment can be much more difficult as the life cycle can vary depending on temperature. The kill rate of treatments can often only manage 95%.



Identification: Skin mucous scrape ideally from as close to the gills as possible. However gill flukes are just as much at home on the body as they are in the gills. Magnification setting of 50X to 100X.

Treatment:

- Supaverm at same dose as above however may not totally eradicate at first pass and may achieve 99% success rate with subsequent treatments.
- Also as above; Flukesolve, Fluke M, Fluke P and Alparex (KH needs to be above 5). Again, subsequent treatments may be required to ensure newly hatched gill flukes are eradicated as much as possible.